



MANCHESTER STATE FOREST

6740 HEADQUARTERS ROAD
WEDGEFIELD, SOUTH CAROLINA 29168-9715
PH: 803-494-8196 • FAX: 803-494-8314

SALE MSF 584 ADV TS 18

October 24, 2017

Sealed per ton bids will be accepted until 11:00 AM, November 13, 2017, by Manchester State Forest, 6740 Headquarters Road, Wedgefield, SC, for the sale of approximately 1,943 tons of pine pulpwood, 906 tons of pine chip-n-saw, and 1,241 tons of pine sawtimber on approximately 164 acres. Bids will be accepted in person, by mail, or by email to (jdouglas@scfc.gov). The seller does not guarantee the approximate volume stated above, and each bidder is encouraged to make their own determination of volumes.

This sale consists of six (6) blocks containing approximately 164 acres to be mechanically thinned. The sale boundaries are indicated on the attached map and are marked with red paint. The trees to be cut are designated as follows: Trees that are suppressed, diseased, poorly formed, forked, or infested by insects should be removed. Trees of the largest diameter should be left unless the tree should be cut due to form or risk. Trees which should be cut due to risk include all leaning or badly diseased trees. Every fourth (4th) row of trees should be removed for access. Leave trees shall be reasonably straight without forks, damage, disease or insect infestation. A tree of poor form shall be left if no other tree is acceptable. Basal area of the leave trees shall average 70 to 75 square feet.

No log decks, tops, or equipment will be allowed in stands joining the sale area. Damage to adjoining areas will be assessed against the performance bond. Existing roads and firebreaks may be used but must be left free of logging debris and in reasonable condition. All recreational trails will be given protection.

A pre-harvest conference between the successful bidder and the sales administrator of Manchester State Forest will be held prior to commencement of harvest and BMP compliance will be required.

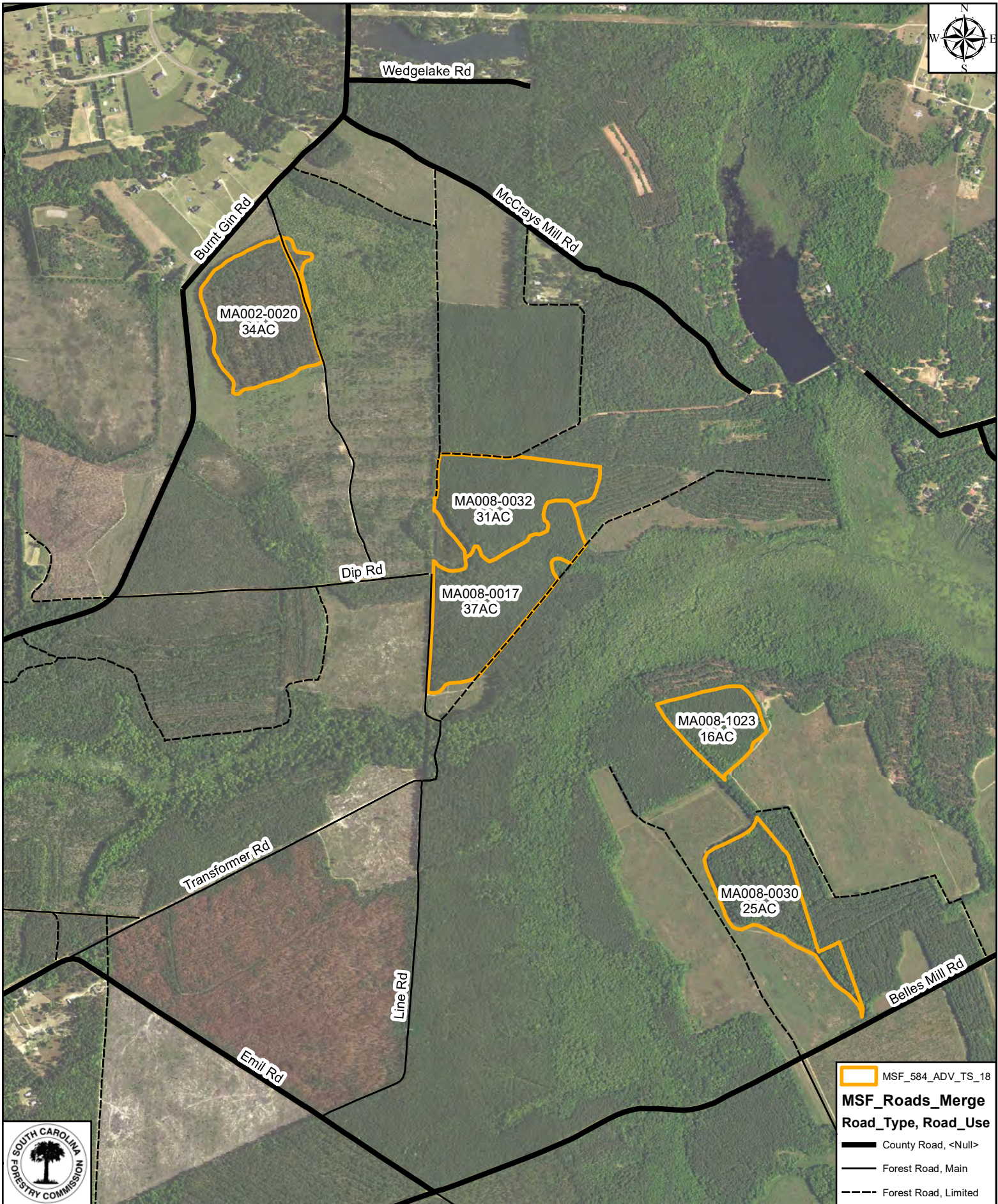
Bids shall be on a single price per ton basis for all pine products. Payments are to be made weekly with weight scale tickets submitted. The successful bidder shall submit a performance bond in the amount of Ten Thousand Dollars and 00/100 (\$10,000.00) at time of contract signing. The successful bidder will have until June 30, 2018 to remove the timber and make payments.

Manchester State Forest is certified through the Sustainable Forestry Initiative® (SFI) and The American Tree Farm System® (ATFS) Standards. A copy of our Sustainable Forestry Policy is available on our website: www.state.sc.us/forest/.

For additional information, contact James Douglas, Forest Director or Ben Kendall, Assistant Director. The SC Forestry Commission reserves the right to reject any or all bids.

Ben Kendall
Assistant Forest Director

Attachments

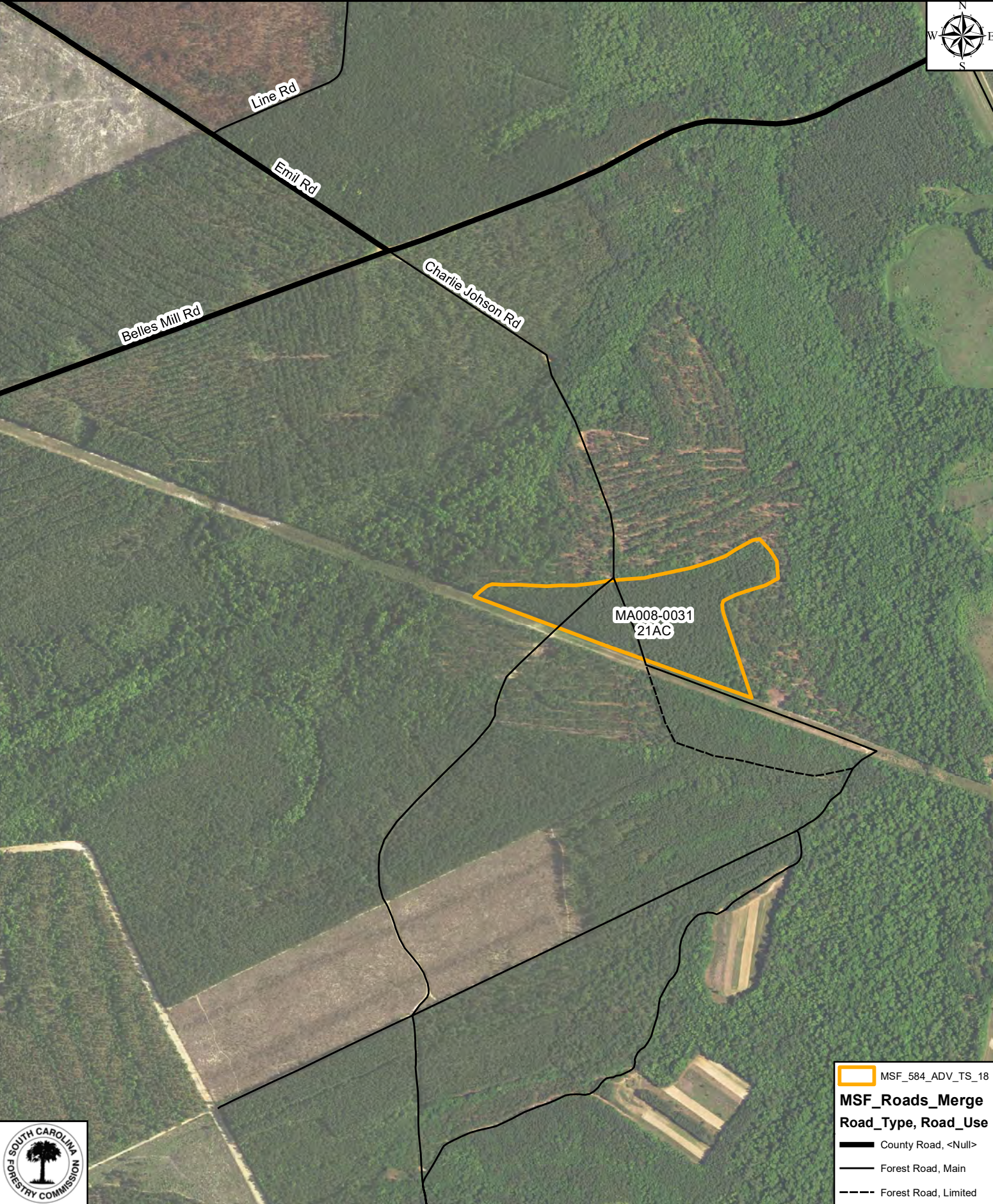


Disclaimer:
 Reasonable efforts have been made to ensure the accuracy of this map. However, boundaries and acres are approximate. I disclaim responsibility for damages or liability that may arise from the use of this map.




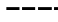
Manchester State Forest
MSF 584 ADV TS 18
164 Acres



Ben Kendall
 10/24/17
 2015 Color

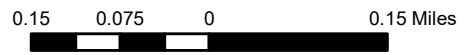


MSF_Roads_Merge
Road_Type, Road_Use

-  MSF_584_ADV_TS_18
-  County Road, <Null>
-  Forest Road, Main
-  Forest Road, Limited

Disclaimer:
Resonable efforts have been made to ensure the accuracy of this map. However, boundaries and acres are approximate. I disclaim responsibility for damages or liability that may arise from the use of this map.

Manchester State Forest
MSF 584 ADV TS 18
164 Acres



Ben Kendall
10/24/17
2015 Color