



## MANCHESTER STATE FOREST

6740 HEADQUARTERS ROAD  
WEDGEFIELD, SOUTH CAROLINA 29168-9715  
PH: 803-494-8196 • FAX: 803-494-8314

### SALE MSF 587 ADV TS 18 April 4, 2018

Sealed lump sum bids will be accepted until 11 AM, April 23, 2018, by Manchester State Forest, 6740 Headquarters Road, Wedgefield, SC, for the sale of approximately 4,203 tons of pine pulpwood, 2,784 tons of pine chip-n-saw, 6,948 tons of pine sawtimber, and 180 tons hardwood sawtimber on approximately 204 acres. Bids will be accepted in person or by email to [bkendall@scfc.gov](mailto:bkendall@scfc.gov). The seller does not guarantee the approximate volume stated above, and each bidder is encouraged to make their own determination of volumes.

This sale consists of three (3) blocks containing approximately 204 acres to be final harvested. The sale boundaries are indicated on the attached map and are marked with orange paint. No log decks, tops, or equipment will be allowed in stands or open areas adjoining the sale area. Damage to adjoining areas will be assessed against the buyer's performance bond. Existing roads and firebreaks may be used but must be left free of logging debris and in reasonable condition. All recreational trails will be given protection.

A pre-harvest conference between the successful bidder and the sales administrator of Manchester State Forest will be held prior to commencement of harvest and BMP compliance will be required.

Payment in the full amount of the bid is to be within ten (10) days of notification of Forestry Commission approval. The successful bidder shall also post, along with the full amount of the bid, a performance bond in the amount of fifteen percent (15%) of the total lump-sum bid price. The successful bidder will have twelve (12) months to remove the timber.

Manchester State Forest is certified through the Sustainable Forestry Initiative® (SFI) and The American Tree Farm System® (ATFS) Standards. A copy of our Sustainable Forestry Policy is available on our website: [www.state.sc.us/forest/](http://www.state.sc.us/forest/).

For additional information, contact Ben Kendall, Assistant Forest Director. Please indicate on the envelope containing your bid the following: BID ON FOREST PRODUCTS, MANCHESTER STATE FOREST, SALE 587.

The SC Forestry Commission reserves the right to reject any or all bids.

Ben Kendall  
Assistant Forest Director

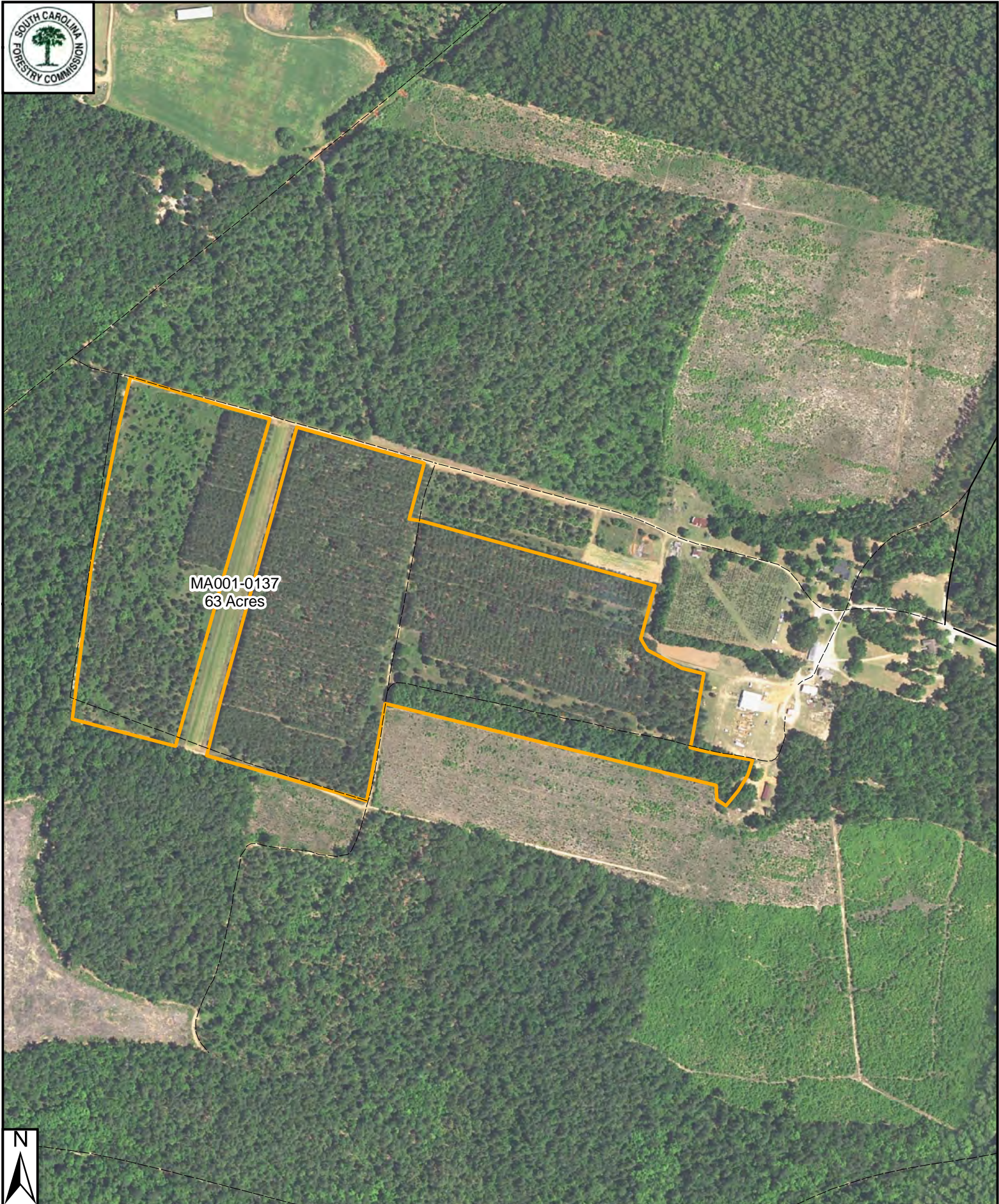
Attachments



Disclaimer:  
Reasonable efforts have been made to ensure the accuracy of this map. However, boundaries and acres are approximate. I disclaim responsibility for damage or liability that may arise from the use of this map.

**Manchester State Forest**  
**MSF 587 ADV TS 18**  
**204 Acres**

Produced by:  
Ben Kendall  
4/4/18



Disclaimer:  
Reasonable efforts have been made to ensure the accuracy of this map. However, boundaries and acres are approximate. I disclaim responsibility for damage or liability that may arise from the use of this map.

**Manchester State Forest**  
**MSF 587 ADV TS 18**  
**204 Acres**

Produced by:  
Ben Kendall  
4/4/18



Wedgefield Road

MA002-0095  
59 Acres



Disclaimer:  
Reasonable efforts have been made to ensure the accuracy of this map. However, boundaries and acres are approximate. I disclaim responsibility for damage or liability that may arise from the use of this map.

Manchester State Forest  
MSF 587 ADV TS 18  
204 Acres

Produced by:  
Ben Kendall  
4/4/18