

SALE MSF 588 ADV TS 18
May 7, 2018

Sealed lump sum bids will be accepted until 11:00 AM, May 22, 2018, by Manchester State Forest, 6740 Headquarters Road, Wedgefield, SC, for the sale of approximately 4,039 tons of pine pulpwood, 181 tons of pine chip-n-saw, and 141 tons of pine sawtimber on approximately 192 acres. Bids will be accepted in person, by mail, or by email to (bkendall@scfc.gov). The seller does not guarantee the approximate volume stated above, and each bidder is encouraged to make their own determination of volumes.

This sale consists of four (4) blocks containing approximately 192 acres to be mechanically thinned. This is a second thinning. The sale boundaries are indicated on the attached map. The trees to be cut are designated with blue paint.

No log decks, tops, or equipment will be allowed in stands joining the sale area. Damage to adjoining areas will be assessed against the performance bond. Existing roads and firebreaks may be used but must be left free of logging debris and in reasonable condition. All recreational trails will be given protection.

A pre-harvest conference between the successful bidder and the sales administrator of Manchester State Forest will be held prior to commencement of harvest and BMP compliance will be required.

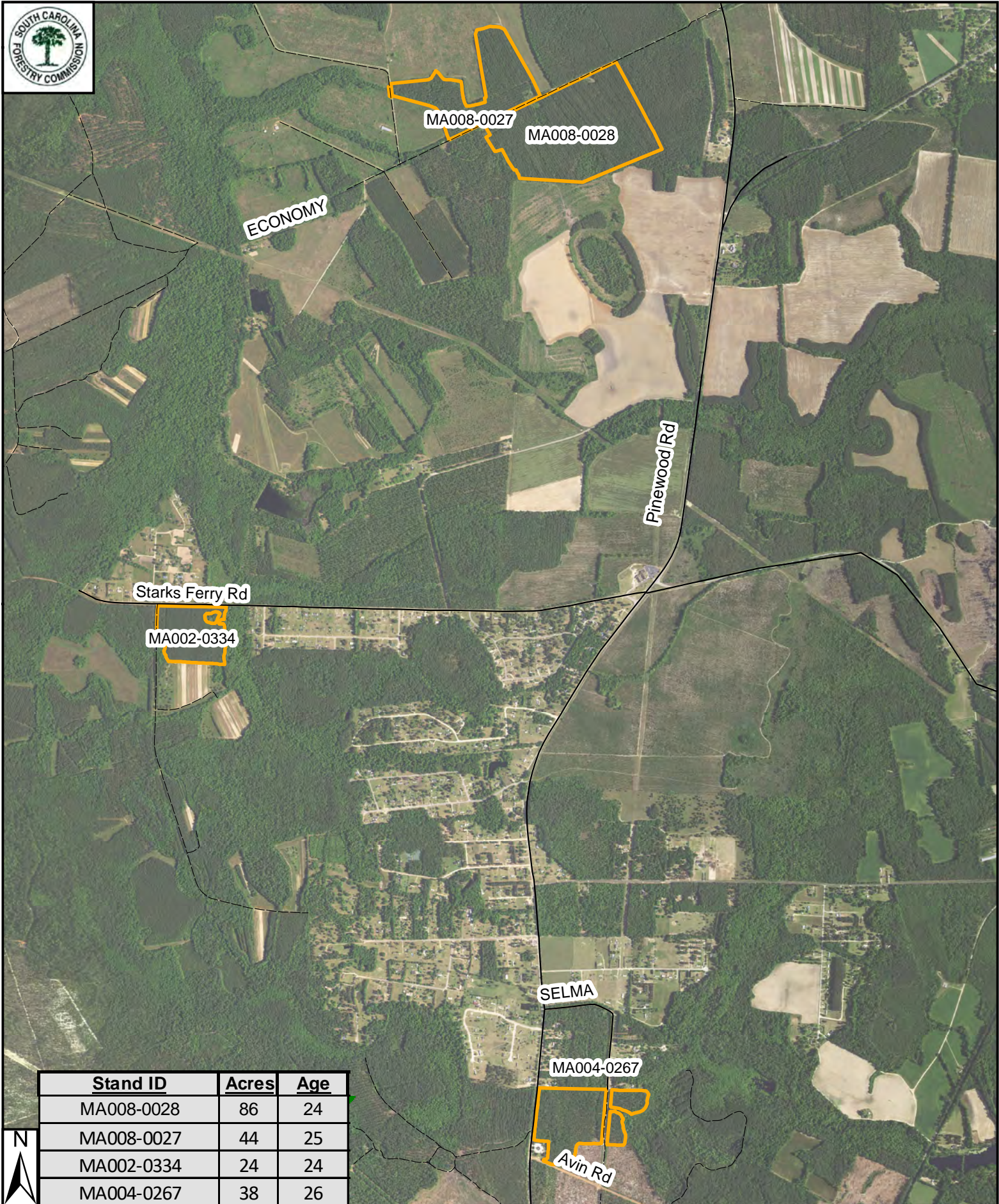
Bids shall be a lump sum price. The successful bidder shall submit a performance bond in the amount of Seven Thousand Dollars and 00/100 (\$7,000.00) at time of contract signing. The successful bidder will have until June 30, 2019 to remove the timber.

Manchester State Forest is certified through the Sustainable Forestry Initiative® (SFI) and The American Tree Farm System® (ATFS) Standards. A copy of our Sustainable Forestry Policy is available on our website: www.state.sc.us/forest/.

For additional information, contact James Douglas, Forest Director or Ben Kendall, Assistant Director. The SC Forestry Commission reserves the right to reject any or all bids.

Ben Kendall
Assistant Forest Director

Attachments



Stand ID	Acres	Age
MA008-0028	86	24
MA008-0027	44	25
MA002-0334	24	24
MA004-0267	38	26



Disclaimer:
 Reasonable efforts have been made to ensure the accuracy of this map. However, boundaries and acres are approximate. I disclaim responsibility for damage or liability that may arise from the use of this map.

MSF 588 ADV TS 18 Marked Thinning Timber Sale

Produced by:
 Ben Kendall
 5/2/18